



Waterhog Impressions

Logo Mats • Indoor/Outdoor

WaterHog Impressions mats feature your custom logo or message digitally printed on a WaterHog mat. These mats are ideal for use as a slip-resistant entrance mat to showcase your custom logo/artwork, or in any area where moisture, tracking, or dripping occurs.



- **Clean & Dry** – Bi-level surface effectively scrapes dirt and moisture from shoes, trapping it beneath shoe level to prevent tracking; water dam border holds moisture keeping it off your floors (WaterHog mats can hold up to 4 liters of water per square meter).
- **Durable** – Heavy-Duty PET carpet is reinforced with rubber nubs that prevent the carpet from crushing and extends the performance life of the mat.
- **Safe** – Rigid rubber backing keeps the mats in place in high traffic areas and areas with heavy cart traffic. Beveled safety edges provide a safe transition from the mat to the floor.
- **Easy to Maintain** – Simply vacuum, hose off or steam clean.
- **56 Standard colour options available.**



Gecko Hygiene
tel: 01633 264355
email: sales@gecko-hygiene.co.uk
web: www.gecko-hygiene.co.uk

Waterhog Impressions

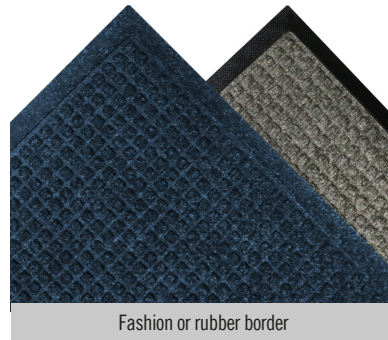
Logo Mats • Indoor/Outdoor



Standard Sizes

60x90
90x150
115x180

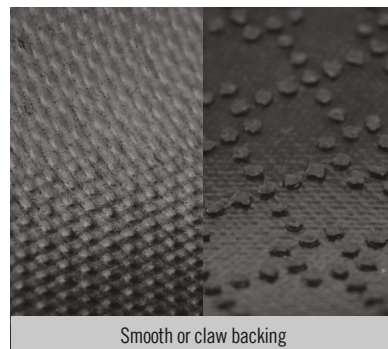
Size Tolerance: +/- 5%



Fashion or rubber border



Bi-level surface



Smooth or claw backing



Specifications

Yarn: Needle punch PET
 Carpet weight: 1.015 g/m²
 Rubber: 100% Nitrile EXS™ (body 1,7 mm; border 3,9 mm)
 Total weight: 3,18 kg/m²
 Total height: 1,09 cm (rubber nub height: 3,2 mm)

Gecko Hygiene
 tel: 01633 264355
 email: sales@gecko-hygiene.co.uk
 web: www.gecko-hygiene.co.uk